

# STEM WALL WALL MOUNT ARRAY SPEAKERPHONE

## OVERVIEW

Stem Wall Mount Array Speakerphone is a high-quality microphone array with built-in speakers and subwoofers. Designed to be mounted on a wall or sit on a flat surface, it optimizes voice pick-up while providing full-range audio to make any environment sound like a professional conference room.

## FEATURES

- 15 built-in microphones create 180 degrees of coverage towards the voice source.
- Two full-range speakers and subwoofers.
- Built-in digital signal processing includes state-of-the-art acoustic echo cancellation, automatic gain control, noise cancellation, and de-reverberation algorithms.
- Automatic configuration and control with Stem Ecosystem platform.
- LED lights indicate voice direction and device status.
- Controls on the device include Volume Up, Down, and Mute.
- Compatible with leading video conferencing platforms.
- Directly connect the standalone device to a PC via USB or use Stem Control Touch Controller to integrate a Stem Ecosystem room solution for video conferencing.
- Power over Ethernet (PoE+).
- Dual mounting options: Wall mount or placed on a credenza.
- Mounting adapter for optional video camera.
- Kensington lock equipped.

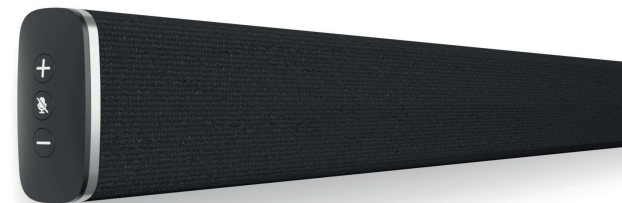
## SPECIFICATIONS (subject to change)

### GENERAL

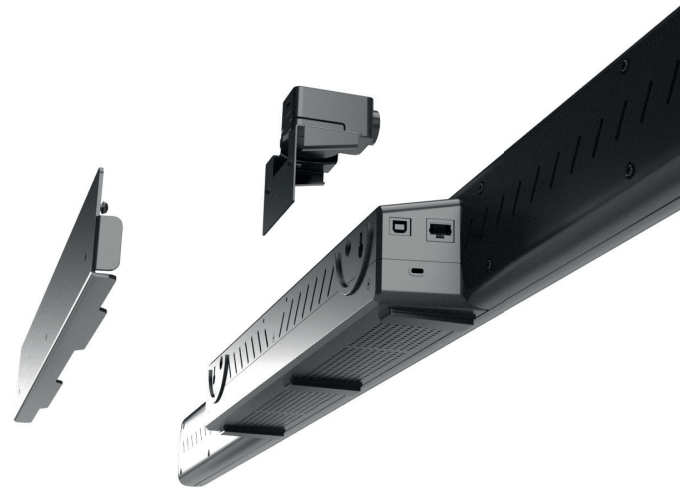
Connector Type	RJ45 and USB Type B
Power Requirements	Power over Ethernet Plus (PoE+) 802.3 at Type 2
Control Application	Stem Ecosystem Platform
Weight	7.5 lbs (3.4 kg)
Product Dimensions	48 x 3.25 x 3.5 in (121.9 x 8.3 x 8.9 cm) W x H x D
Operating Temperature Range	-6.7°C (20°F) to 40°C (104°F)
Storage Temperature Range	-29°C (-20°F) to 74°C (165°F)

### AUDIO

Coverage Angle	180 degrees
Frequency Response	50 Hz to 16 kHz
Built-in DSP	Automatic Voice-Level Adjustment (AGC); 100% Full Duplex, no attenuation in either direction
Noise Cancellation	>15dB (without pumping noise)
Acoustic Echo Cancellation	>40dB with conversion speed of 40dB/sec; residual echo is suppressed to the environment noise level, preventing artificial ducking of signal; High-end performance conforms to ITU-T G.168



STEM WALL  
Controls



STEM WALL  
Mounting & Connectivity

## ACCESSORIES (included in the box)

- CAT 6 Ethernet Cable: 15 ft. (4.6 m)
- USB Type A to USB Type B Cable: 12 ft. (3.7 m)
- Wall Mount Bracket, Magnetic Level, Philips Head Screws with Anchors (3)
- Camera Mount Accessory Kit